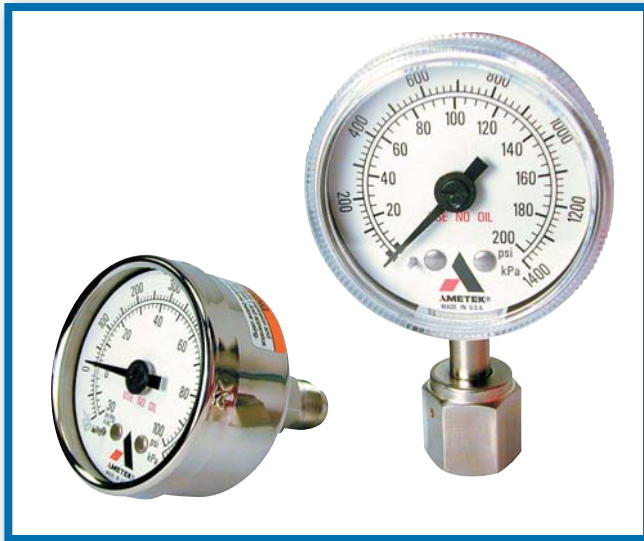


# Model 1535

## 2-inch Stainless Steel Pressure Gauges for Semiconductor



### Description

U.S. Gauge Model 1535 pressure gauges are designed and manufactured for ultrahigh-purity gas distribution equipment used in semiconductor manufacturing. These 2 inch, all stainless steel gauges are clean room produced, nitrogen purged, and double bagged in 3 mil nylon bag and 6 mil poly bag.

These instruments are compatible with many toxic and corrosive gases. Welded face seal connections provide a threadless pressure seal and virtually eliminate a major source of contamination. Also available in NPT connections.

The Model 1535 is available in pressure ranges from 0 to 30 inches Hg. VAC, to 0 to 4000 psi. This precision gauge incorporates rugged case construction with rear pressure relief, and a seamless Bourdon tube with welded joints for heavy-duty service.

### Features

- Cleaning for UHP gas applications exceeding ANSI B40.1 specifications
- Face seal and gland connection (wetted surfaces) are electropolished and have a less than 10 Ra finish

- Helium leak tested to confirm leakage rates of less than  $10^{-9}$  scc/sec.
- All stainless steel (Type 316L) internal surfaces for corrosion resistance
- Large, easy-to-read dial graduations
- Handles wide variety of exotic gases
- Available with welded face seal fittings, or NPT connection
- Assembled and packaged in Class 100 clean room
- Low mount or center back connections

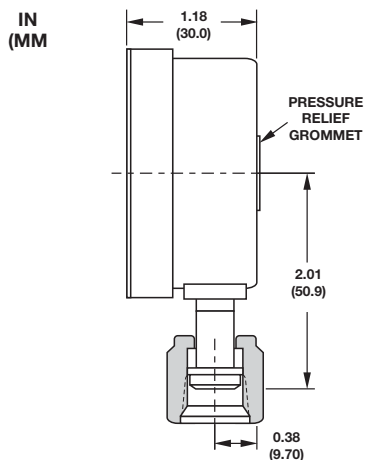
### Specifications

- **Size:** 2 inch diameter
- **Case:** Drawn stainless steel polished with pressure relief in back of case
- **Ring and window:** One piece, threaded polycarbonate, or optional friction ring with polycarbonate or glass lens
- **Pointer:** Aluminum, adjustable zero, black finish
- **Dial:** Aluminum, white background with black markings
- **Bourdon Tube:** Type 316L seamless stainless steel
- **Connection:** Type 316L stainless steel, low mount or center back mount, male or female face seal fitting, or 1/4 inch male NPT. Connectors are shipped with protective plastic caps.
- **Surface Finish:**  
Face seal connections: 10RA  
1/4 in. NPT connections: 32RA
- **Ranges:** 30 in. Hg. vacuum to 4000 psi, single or dual scale, see ordering information
- **Overpressure:** 110% of span maximum
- **Accuracy:**  
 $\pm 1\%$  of span (less than 3000 psi)  
 $\pm 2\%$  of span for ranges 3000 psi and above
- **Scales:** psi, bar, kg/cm<sup>2</sup>, KPa, MPa (single or dual scale) in Hg. (for vacuum range, compound and vacuum gauges only)

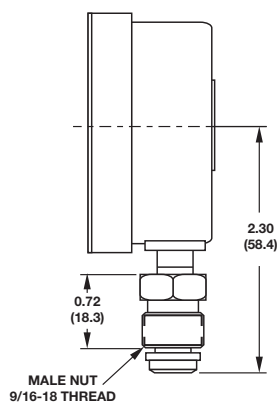
# Model 1535 2-inch Stainless Steel Pressure Gauges

## Dimensions

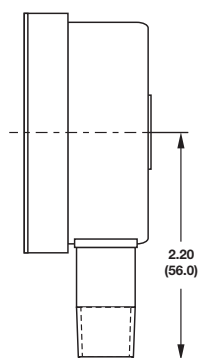
### Low Mount



Swivel Female Face Seal

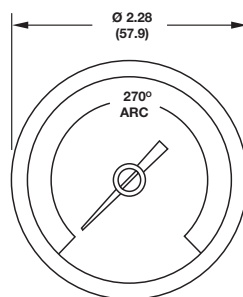


1/4 Face Seal

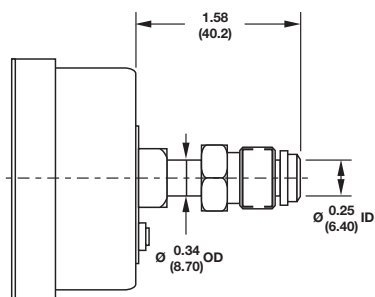
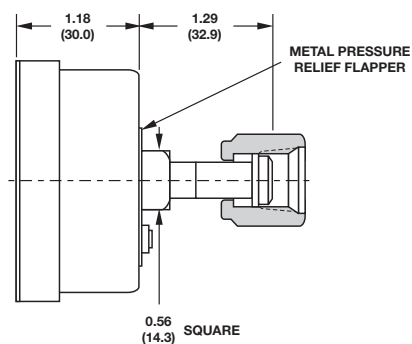


1/4 NPT

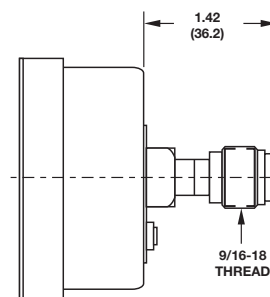
### Center Back Mount



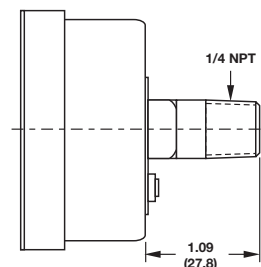
Swivel Female Face Seal



1/4 Face Seal



Fixed Male Face Seal



1/4 NPT

## Model Numbering:

1535 2-inch stainless steel pressure gauges					
1535	2-inch stainless steel pressure gauges for semiconductor				
	Pressure range				
	0015	0 to 15 psi	2000	0 to 2000 psi	
	0030	0 to 30 psi	3000	0 to 3000 psi	
	0060	0 to 60 psi	4000	0 to 4000 psi	
	0100	0 to 100 psi	VAC	0 to 30 In. Hg vacuum	
	0150	0 to 150 psi	V-0-15	Compound (vac to 15 psi)	
	0160	0 to 160 psi	V-0-30	Compound (vac to 30 psi)	
	0200	0 to 200 psi	V-0-60	Compound (vac to 60 psi)	
	0300	0 to 300 psi	V-0-100	Compound (vac to 100 psi)	
	0400	0 to 400 psi	V-0-150	Compound (vac to 150 psi)	
	0600	0 to 600 psi	V-0-160	Compound (vac to 160 psi)	
	1000	0 to 1000 psi	V-0-200	Compound (vac to 200 psi)	
	1500	0 to 1500 psi	V-0-300	Compound (vac to 300 psi)	
	Dial units				
	PSI	psi			
	IN.HG	In. Hg (compound and vacuum)			
	BAR	bar			
	KPA	kPa			
	PSI/BAR	psi and bar			
	PSI/KG	psi and kg/cm <sup>2</sup>			
	PSI/KPA	psi and kPa			
	KG/MPA	kg/cm <sup>2</sup> and MPa			
	Process connection location				
	LM	Low mount			
	CBM	Center back mount			
	Process connection type				
	NPT	1/4 NPT male fixed			
	MVCR	Male face seal swivel			
	MVCRF	Male face seal fixed (center back mount only)			
	FVCR	Female face seal swivel			
	Options				
	FR	Friction ring, polycarbonate lens			
	FRG	Friction ring, glass lens			
1535	0030	KPA	CBM	FVCR	FR

# Model 1535 2-inch Stainless Steel Pressure Gauges



820 Pennsylvania Boulevard • Feasterville, PA 19053 • U.S.A.  
Tel: 215-355-6900 • Fax: 215-354-1802 • [www.ametekpmt.com](http://www.ametekpmt.com)

© AMETEK, Inc. All rights reserved • Printed in the U.S.A. • PDF608 (110097) K796435